



Design Thermostat Wall Mounted RF/SMART Battery

Model: **CFTDW**



Quick Guide

INTRODUCTION

CFTDW is a ZigBee temperature controller for wireless control of other devices, such as the **CFKLB** wiring centre. In order to control **CFTDW** over the Internet or via the Smart Home mobile app (ONLINE mode), it must be installed together with the Gateway **CGW** (sold separately). **CFTDW** can be used locally without an Internet connection (OFFLINE mode).



IOS



Android



PRODUCT COMPLIANCE

This product complies with the essential requirements and other relevant provisions of the following EU Directives: EMC 2014/30/EU, LVD 2014/35/EU, RED 2014/53/EU and RoHS 2011/65/EU.

SAFETY INFORMATION

Use in accordance to national and EU regulations. Use the device as intended, keeping it in dry condition. Product for indoor use only. Installation must be carried out by a qualified person in accordance to national and EU regulations. Disconnect your equipment before cleaning it with a dry cloth.

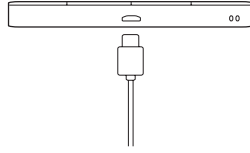
Warning: Please always ensure the AC 230V mains power is switched off before installing or working on any components.

TECHNICAL SPECIFICATION

Power Supply	Built-in Li-ion 3,7V Battery
Charging voltage (no charger included)	Micro-USB 5V DC, min 0,5 A
Temperature range	5-35°C
Display temperature accuracy	0.5°C or 0.1°C
Control algorithm	ITLC SPAN (±0.25°C / ±0.5°C) THB
S1-S2 Input (multifunctional input)	Floor temperature Air temperature Occupancy sensor One Touch Changeover (heating/cooling)
Communication protocol	ZigBee 2,4GHZ
Mounting	Surface mounting
Working temperature	0-45°C
IP protection class	IP30
Dimensions [Width x Height x Deep]	86 x 86 x 11 mm

BEFORE YOU START

The **CFTDW** thermostat is partially charged, however, we recommend you to fully charge the battery before use. Connect charger to micro-USB Port which is at the bottom of **CFTDW** Thermostat to charge the device.

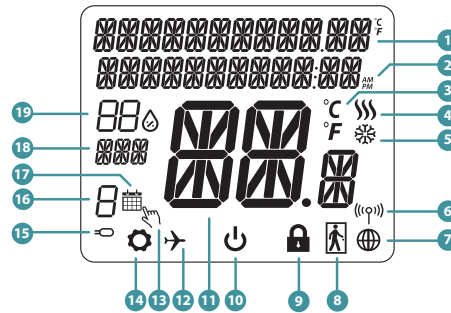


Charging to full battery level may take up to 24h maximum.

MOUNTING

To mount the thermostat, you can use included accessories (mounting screws or self-adhesive tape). Remove back cover to mount the plate to the wall. After this just attach thermostat to the plate (it has built-in magnet).

LCD ICON DESCRIPTION

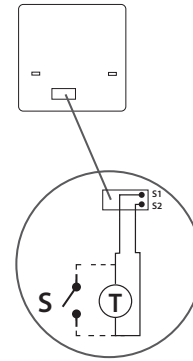


1. Menu/Settings description + Clock
2. AM/PM
3. Temperature unit
4. Heating indicator (icon is animating when there is heating demand)
5. Cooling indicator (icon is animating when there is cooling demand)
6. RF Connection indicator
7. Internet connection indicator
8. Occupancy sensor (hotel card)
9. Key lock function
10. Standby mode icon
11. Current Temperature / Setpoint Temperature
12. Holiday mode
13. Temporary override mode
14. Settings icon
15. External / Floor temp sensor indicator
16. Schedule program number
17. Schedule mode icon
18. Day indicator / SET information
19. Current Humidity value

BUTTON FUNCTIONS

BUTTON	FUNCTION
☰	1) Menu button / Return button. 2) In the MAIN SCREEN: Press and hold for 3 sec to change the thermostat operating mode (Schedule mode / Permanent mode / Temporary override mode). 3) In the SETTINGS SCREEN: Press and hold for 3 sec to go back without saving the changes. 4) In the PAIRING SCREEN (in SYSTEM TYPE Menu): Press and hold for 3 sec to see other pairing options.
∨	„Down“ Button (Decrease parameter value/moving on the menu in 'DOWN' direction)
∧	“Up“ Button (Increase parameter value/moving on the menu in 'UP' direction)
✓	1) “OK / Tick“ Button (Confirm parameter value / Go to the next menu / Save settings). 2) In the MAIN SCREEN: Press and hold for 3 seconds to enter Standby mode. 3) In the SETTINGS SCREEN: Press and hold for 3 sec to go back to the MAIN SCREEN & SAVE all the changes.
∨ + ∧	In the MAIN SCREEN - press and hold these buttons together for 3 seconds to LOCK / UNLOCK the Thermostat keys.

WIRING DIAGRAM



SYMBOLS EXPLANATION:

S - volt-free contact

T - temperature sensor

S1, S2 Terminals:
- air or floor temperature sensor
- external volt-free contact to connect any ON/OFF switch or occupancy sensor (Hotel card)

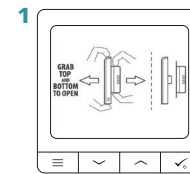
SELECT THE TYPE OF ZIGBEE COORDINATOR

- Online - connected to the Internet via the Gateway
- Offline - the ability to connect to the Internet using the Gateway
- Offline - without Internet connection with coordinator

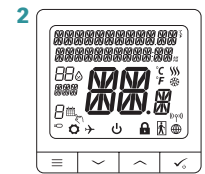


FIRST POWER UP SEQUENCE

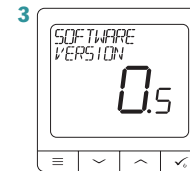
For easier installation, please make sure you have already added other devices to your ZigBee network, such as Underfloor Heating Wiring Centre (**CFKLB**).



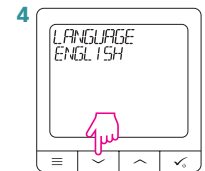
To power on the Thermostat you have to connect it to the 230V power then...



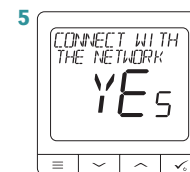
...display will show all icons...



...then thermostat will display the software version.



Now, choose your language using ∨ or ∧ buttons. Confirm your language using ✓ button.



YES - ONLINE, OFFLINE MODE
You can configure your thermostat with Universal Gateway or the Coordinator. That is, add it to the Salus Smart Home system.

NO - STANDALONE
Thermostat work as a standalone device for pump, boiler, receivers etc. That is, you can directly connect thermostat to selected device without any network system. You can add it later anytime.

INSTALLATION IN ONLINE MODE

After Language selection follow below steps to add your device to the Smart Home app and pair with other devices:



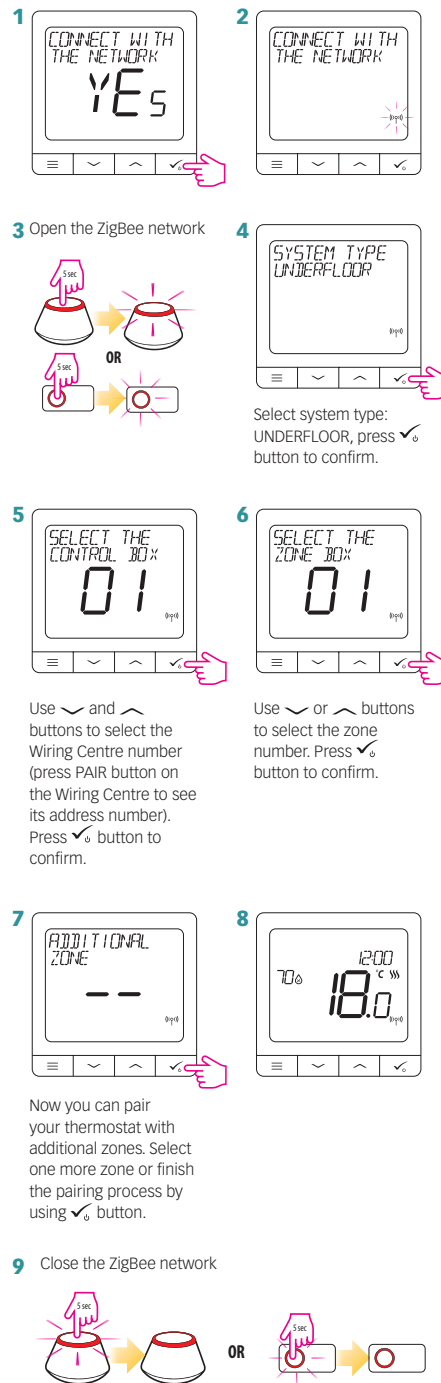
Note: In step 5, you can also click the gear icon and continue to setup CFTDW directly with a compatible device.

After that thermostat will show main screen. You successfully configured the CFTDW Thermostat.

INSTALLATION IN OFFLINE MODE

PAIRING WITH CFKLB

Install the wiring centre according to the instructions attached to the product.

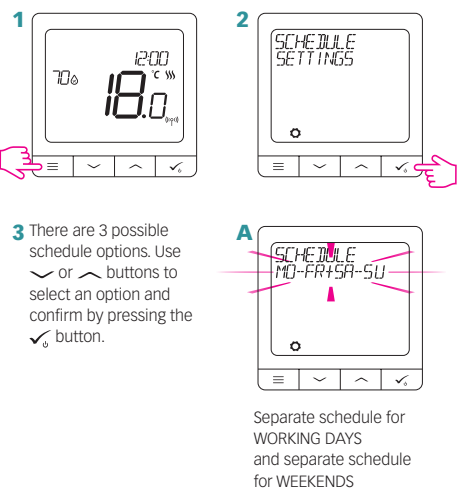


Use \downarrow and \uparrow buttons to select the Wiring Centre number (press PAIR button on the Wiring Centre to see its address number). Press \checkmark button to confirm.

Use \downarrow or \uparrow buttons to select the zone number. Press \checkmark button to confirm.

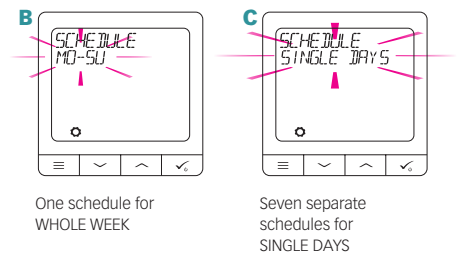
Now you can pair your thermostat with additional zones. Select one more zone or finish the pairing process by using \checkmark button.

PROGRAMMING IN OFFLINE MODE

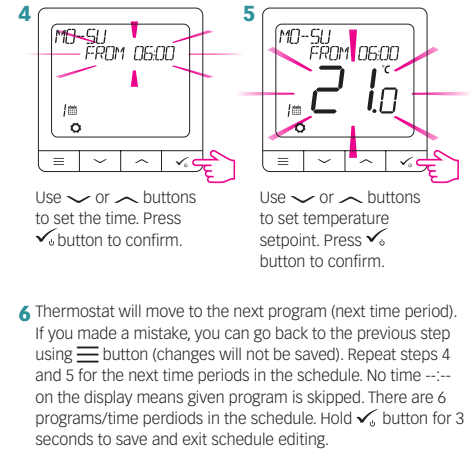


There are 3 possible schedule options. Use \downarrow or \uparrow buttons to select an option and confirm by pressing the \checkmark button.

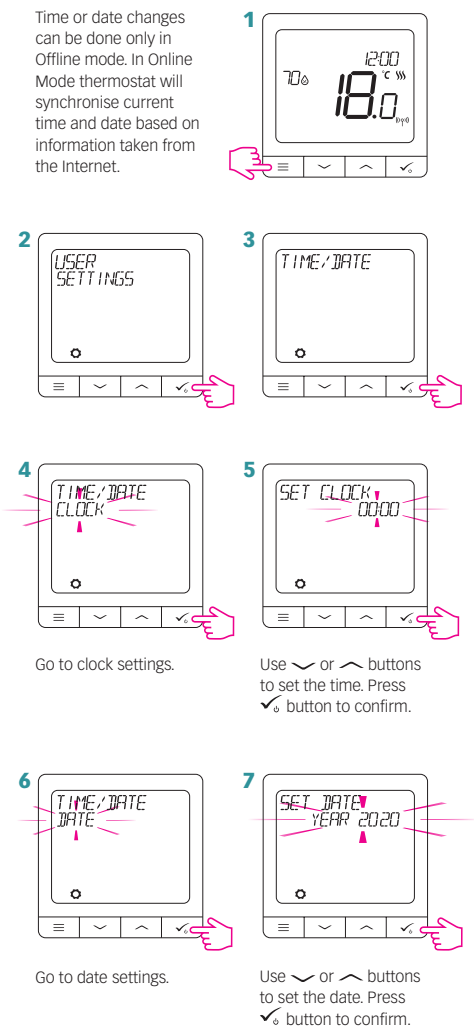
Separate schedule for WORKING DAYS and separate schedule for WEEKENDS



SCHEDULE PROGRAMMING EXAMPLE FOR THE WHOLE WEEK



SETTING TIME AND DATE



Time or date changes can be done only in Offline mode. In Online Mode thermostat will synchronise current time and date based on information taken from the Internet.

Go to clock settings.

Use \downarrow or \uparrow buttons to set the time. Press \checkmark button to confirm.

Go to date settings.

Use \downarrow or \uparrow buttons to set the date. Press \checkmark button to confirm.



COSMO GmbH
Brandstücken 31
22549 Hamburg
info@cosmo-info.de
www.cosmo-info.de

February 2020
V002

