



## Electronic Wall Mounted Battery Operated RF Thermostat

Model: **CFTN**



Quick Guide

## INTRODUCTION

**CFTN** is a wireless dial room thermostat used for underfloor heating and it is compatible with **CFKL8** Wiring Centre.

## PRODUCT COMPLIANCE

This product complies with the essential requirements and other relevant provisions of Directives RED 2014/53/EU and RoHS 2011/65/EU.

2405MHz-2480MHz; <14dBm (Zigbee)

## SAFETY INFORMATION

Use in accordance with the regulations. Indoor use only. Keep your device completely dry. Disconnect your device before cleaning it with a dry cloth.

**Note:** This accessory must be fitted by a competent person, and installation must comply with the guidance, standards and regulations applicable to the city, country or state where the product is installed.

## BOX CONTENT



Thermostat



2 x AA alkaline batteries



Quick Guide



2 x fixing screws



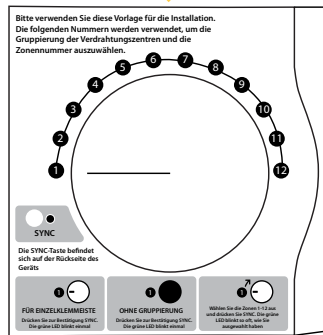
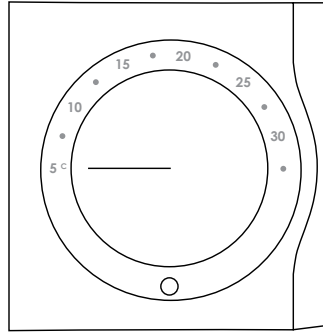
www.cosmo-info.de  
info@cosmo-info.de  
22549 Hamburg  
Brandstücken 31  
**COSMO** GmbH

March 2020  
V004



## OVERLAY INFORMATION

**For reference only.** The image below explains the correlation between the temperature scale and the pairing scale. To be used for the initial set-up or in case of Lost Link Error. Please keep the sticker on until installation is complete.



## LED INDICATION

LED DESCRIPTION

### BEFORE PAIRING

- Wanting to join network
- Joined the network successfully

### AFTER PAIRING

- Pairing Complete
- Wiring Centre number selection OK
- Wiring Centre group selection OK
- Wiring Centre zone selection OK
- Identify process ON

### ERROR CODES

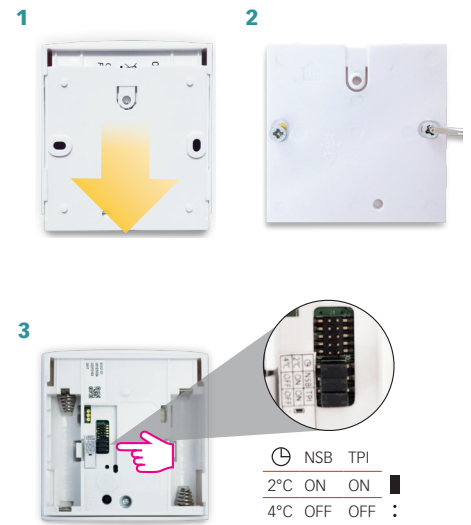
- Lost connection with the Coordinator / the **CFKL8** Wiring Centre
- CFTN** has been reset
- Low battery
- Pairing failed
- Error when trying to add two **CFTN** to the same Wiring Centre Zone
- Device reset

### Note:

When thermostat is calling for heating / cooling, the LED will be OFF. If you encounter the lost link error, repeat the Pairing procedure.

When cooling is selected, there always will be a delay of 2 minutes for the switch.

## INSTALLATION



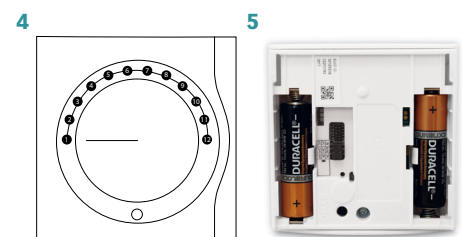
Make your jumper settings

| JUMPER           | FEATURE   | DEFAULT                               |
|------------------|---|---------------------------------------|
| TPI*/SPAN        | TPI (jumper ON) or Span 0.5 C (remove jumper)             | TPI ON                                |
| NSB**            | Night Setback (NSB) ON (jumper ON) or OFF (remove jumper) | ON                                    |
| Setback value*** | -2°C (jumper ON) or -4°C (remove jumper)                  | -2°C for heating and +2°C for cooling |

\*TPI will determine the pattern of your heating periods and will adjust it so that the temperature point will be maintained longer.

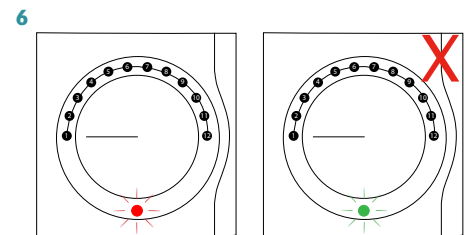
\*\*NSB (Night Setback) will only operate if there is a master thermostat set on the Wiring Centre. If there is no master set, there is no need to remove the jumper.

\*\*\*NSB will only operate if there is a master thermostat set on the Wiring Centre. If there is no master set, there is no need to remove the jumper.



Make sure that the thermostat dial is set in position 1.

Insert the batteries.



Check the status of the **CFTN** during the first power up. Flashing RED for 2 sec = NOT PAIRED. Flashing GREEN for 2 sec = PAIRED. If **CFTN** flashes green, but you need to re-pair it, please check the Factory Reset section.

## PAIRING

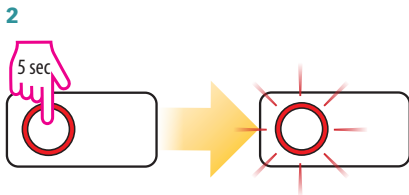
**Warning:** Always use a **CFKL8** Wiring Centre that is ready for pairing.

Use the pre-set dial position for pairing 1 wiring Centre, 0 Groups and 1 Zone. For more Groups or Zones please move the dial in the desired position.

**Note:** The number of times the LED flashes green will correspond with the number of the Groups or of the Zones selected.



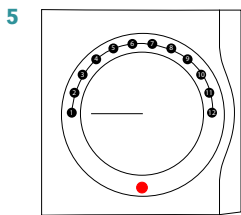
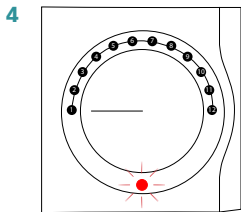
Install the wiring centre according to the instructions attached to the product.



Open the ZigBee network

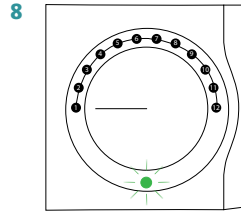
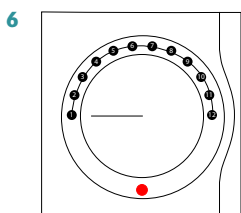


Press the SYNC button until flashing red.



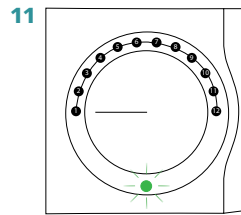
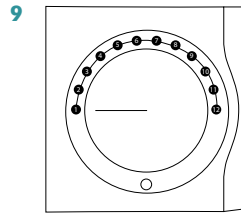
**CFKN** has joined the network once the LED is solid red.

SELECT POSITION 1 FOR **CFKL8** WIRING CENTRE



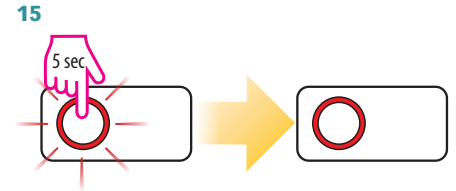
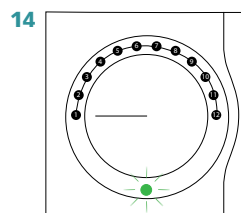
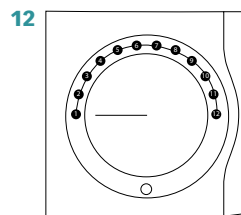
SELECT THE GROUP NUMBER

No Grouping = Position 1;  
Gr1= Position 2;  
Gr2 = Position 3



SELECT THE ZONE NUMBER (UP TO 8 ZONES)

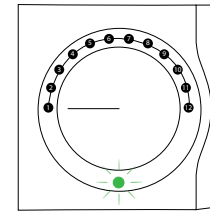
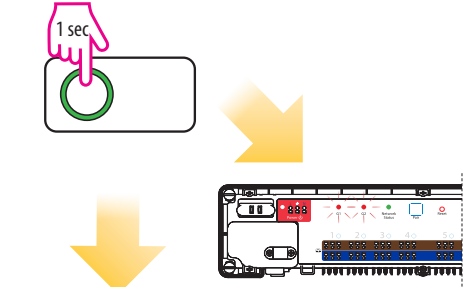
Zone 1 = Position 1;  
Zone 2= Position 2;  
Zone 8 = Position 8



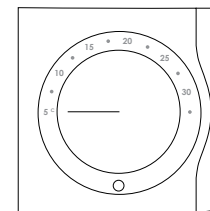
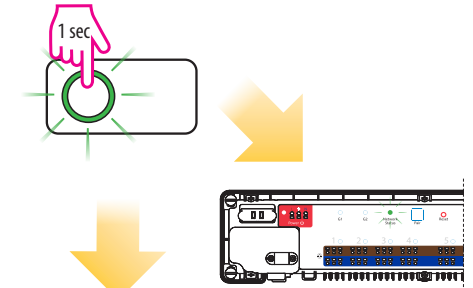
Close the ZigBee network

## IDENTIFY

1 START



2 STOP



## FACTORY RESET

