



## Bezel Type Thermostat Wired 230V

Model: **CRT55**



Quick Guide

## INTRODUCTION

**CRT55** is an electronic flush mount Room Thermostat for Bezel 55, which offers key advantages over conventional mechanical products.

## PRODUCT COMPLIANCE

This product complies with the essential requirements and other relevant provisions of Directives: EMC 2014/30/EU, LVD 2014/35/EU and RoHS 2011/65/EU.

## SAFETY INFORMATION

Use in accordance with the regulations. Indoor use only. Keep your equipment completely dry. Disconnect your equipment before cleaning it with a dry towel.

## INSTALLATION

This accessory must be fitted by a competent person, and installation must comply with the guidance, standards and regulations applicable to the city, country or state where the product is installed. Failure to comply with the relevant standards could lead to prosecution.

## BOX CONTENT



Thermostat Front Case



Thermostat Rear Case



Quick Guide



2 x fixing screws



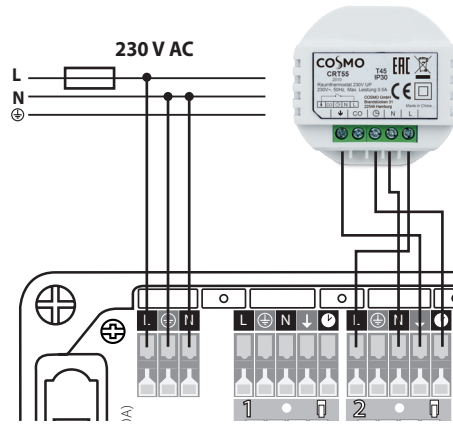
March 2020 V001  
 www.cosmo-info.de  
 info@cosmo-info.de  
 22549 Hamburg  
 Brandstücken 31  
**COSMO** GmbH



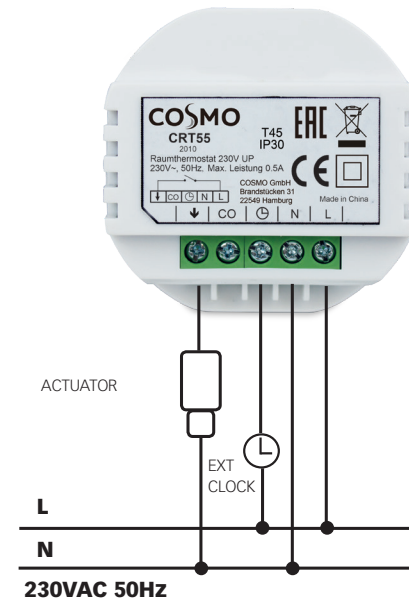
## WIRING DIAGRAM

You can wire the thermostat directly to the **CKL6230N** wiring centre or to an actuator (purchased separately).

### CKL6230N WIRING CENTRE



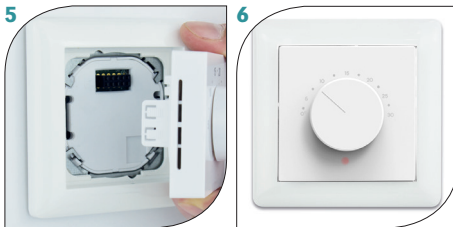
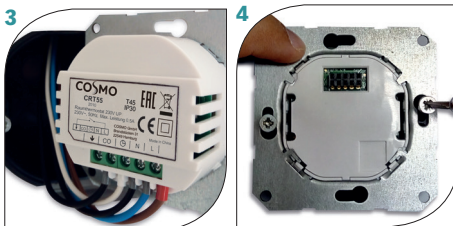
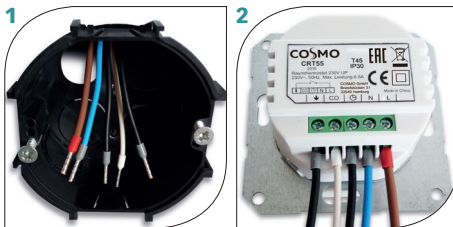
### ACTUATOR



230VAC 50Hz

## MOUNTING

Please refer to the images below for mounting your thermostat.



## TERMINALS DESCRIPTION

TERMINAL	FUNCTION
↓	Switching Live (output)
CO	Changeover, 0V for heating or 230V for Cooling (input)
⌚	0V normal temp mode; 230V reduced temp mode (input)
N	Neutral Input
L	Live Input

## CRT55 JUMPERS



Different features of the **CRT55** can be switched ON or OFF with the jumpers. In order to do this please follow the table below.

JUMPER	FEATURE	ON	OFF
COOLING	Close: Cool block disabled; Cooling enable Open: Cool block enabled; Cooling disable	●●	○○
SETBACK	NSB Function (2°C or 4°C selectable)	2°C	4°C
PWM	Pulse-Width-Modulation	●●	○○
VP	Valve protection	●●	○○

The jumpers from 1 to 5 represent the number of actuators that you can connect to the thermostat. After the actuators are mounted, please move the jumper on the correct number (the same as the number of actuators).

## NSB (NIGHT SETBACK)

NSB Mode is always ON, giving the possibility to choose a reduction between 2°C or 4°C.

The NSB signal is activated every 1 second. When the signal is received the setpoint temperature will be reduced by 2°C or 4°C.

## AUSWAHL HEIZEN / KÜHLEN

The Heating/Cooling function is determined by the CO terminal connection.

CO 0V= Heating Mode  
 CO 230V= Cooling Mode

## FUNKTION KÜHLUNG BLOCKIERT

**Cooling Enabled:** Set the jumper to ON position ●●. The thermostat will run in normal cooling mode. That means that it will open/close the actuators when necessary. The LED will be BLUE when the cooling function is running.

**Cooling Disabled:** Set the jumper to OFF position ○○, CO terminal will be deactivated. Heating mode only.

## KONTROLLMUSTER

This product has a jumper to choose output control pattern, PWM output or ON/OFF output. In heating mode, there is PWM or ON/OFF control output. In cooling mode, only ON/OFF control output.