



Digital Bezel Type Programmable Wired Thermostat 230 V

Model: **CRTD55**



Quick Guide

INTRODUCTION

The **CRTD55** thermostat is a stylish and accurate programmable flush mount digital room thermostat for Bezel 55. You can now simply adjust your home temperature as desired in order to create a comfortable home environment.

PRODUCT COMPLIANCE

This product complies with the essential requirements and other relevant provisions of Directives: EMC 2014/30/EU, LVD 2014/35/EU and RoHS 2011/65/EU.

SAFETY INFORMATION

Use in accordance with the regulations. Indoor use only. Keep your equipment completely dry. Disconnect your equipment before cleaning it with a dry towel. The unit is to be used for the control of room temperature inside the house.

BOX CONTENT



Front case



Rear case



Quick Guide



2x fixing screws



February 2020
V003

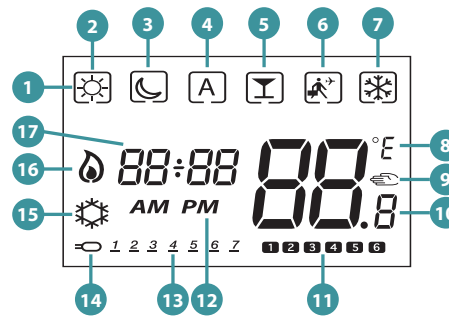
COSMO GmbH
Brandstücken 31
22549 Hamburg
info@cosmo-info.de
www.cosmo-info.de



TERMINALS DESCRIPTION

TERMINAL	DESCRIPTION
↓	Switching Live (output)
CO	Changeover; 0V for heating or 230V for Cooling (input)
NSB	0V normal temp mode; 230V reduced temp mode (output)
N	Neutral Input
L	Live Input
S1/S2	Floor sensor (optional)

LCD ICON DESCRIPTION



- | | |
|--|-------------------------------|
| 1. BOX indicates which mode is active | 10. Temperature indicator |
| 2. Standard temperature | 11. Programs number indicator |
| 3. Reduced temperature | 12. AM / PM |
| 4. Automatic | 13. Day of the week |
| 5. Party mode | 14. Floor sensor connected |
| 6. Holiday mode | 15. Cool mode |
| 7. Frost protection | 16. Heat mode |
| 8. Temperature unit | 17. Time indicator |
| 9. Temporary override indicator | |

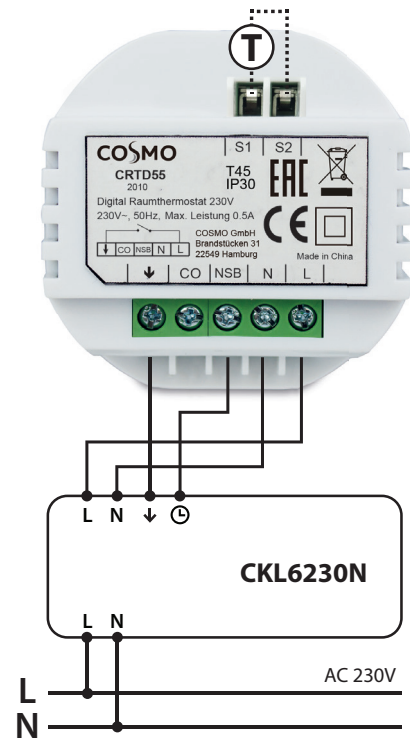
BUTTON FUNCTIONS

BUTTON	FUNCTION
<	- Move left to new mode or new settings - Short press to return to the previous screen when it is in user/installer setting mode - Long press to return to home display without saving
>	Move right to new mode or new setting
✓	- OK key: Short press to confirm selection - Long press to direct return to home display with saving during the period of setting - Long press to enter Program /Clock / Offset / HeatCool setting for user
⏏	- Increase or decrease Setpoint Temperature - Increase or decrease Day, Clock, timer (party/holiday)

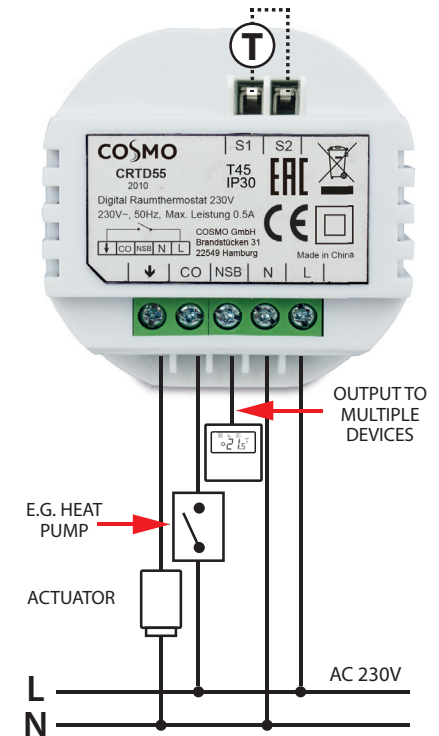
WIRING DIAGRAM

You can wire the thermostat directly to the **CKL6230N** wiring centre or to an actuator (purchased separately).

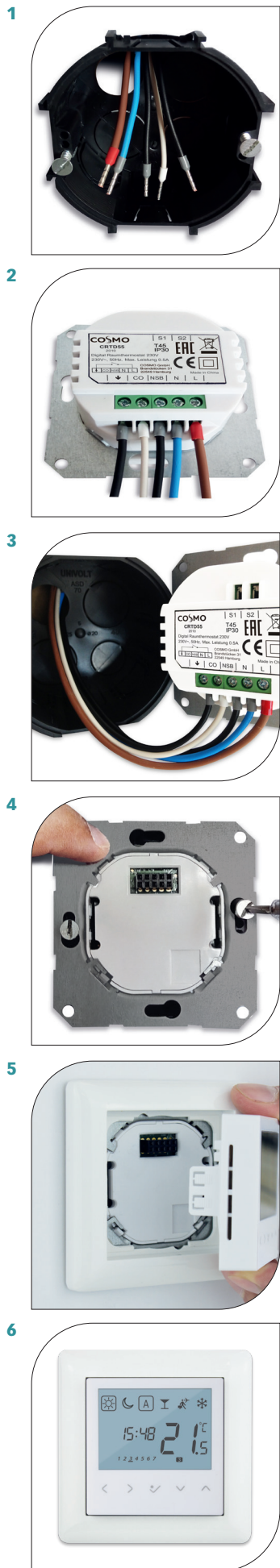
CKL6230N WIRING CENTRE



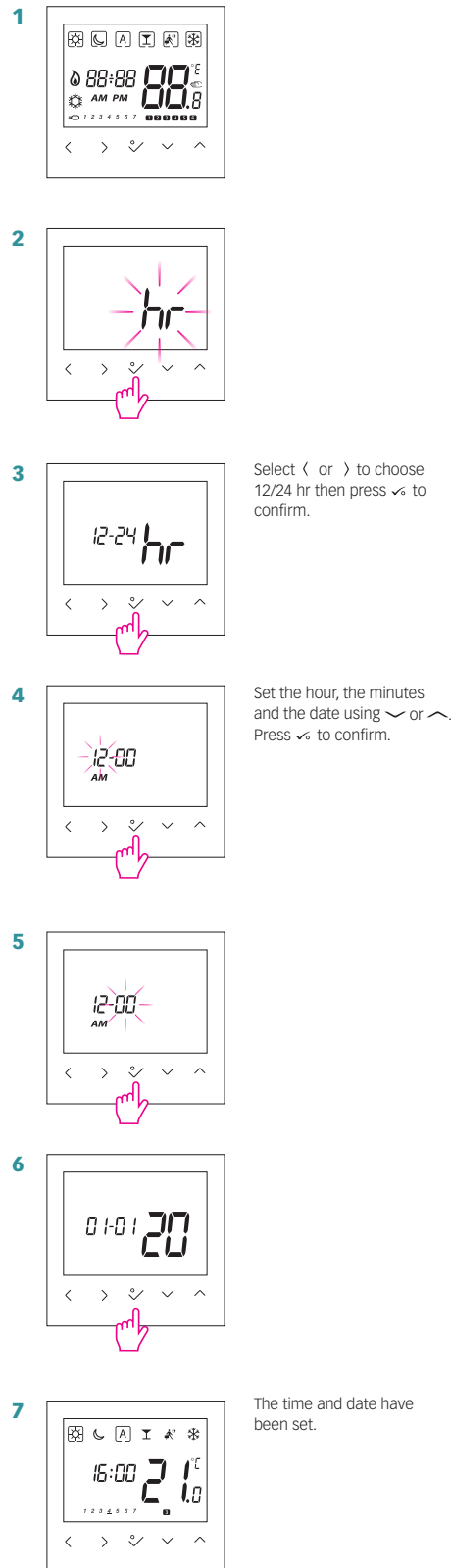
ACTUATOR



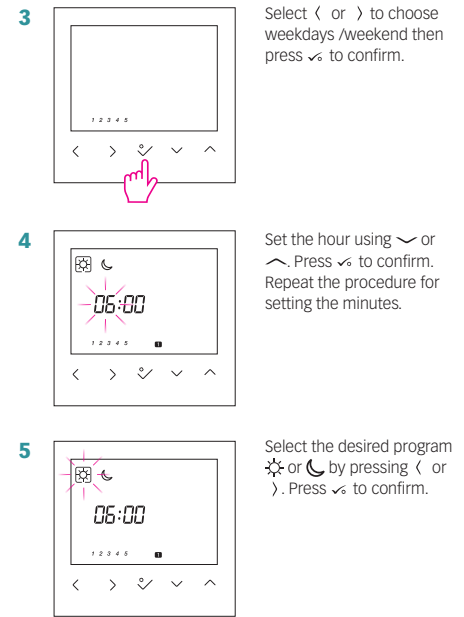
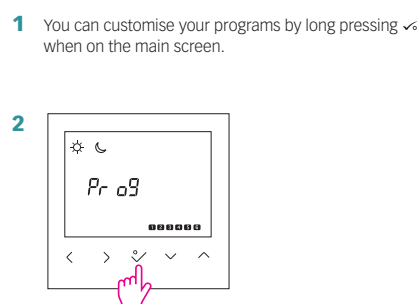
MOUNTING



SETTING TIME AND DATE



PROGRAMMING



OVERRIDE

When in automatic mode you can override the temperature by pressing < or > until the next switching of the program.

MANUAL CONTROL

You can set your thermostat into manual control by moving the box icon to the sun symbol ☀ or the moon symbol ☾ only, here you can change your temperature by pressing < or >. Press ✓ to confirm.

RESET

